



2020 ANNUAL
REPORT



目錄
TABLE
OF
CONTENT

| | |
|----|---|
| 02 | 序言、董事會及團隊 PREFACE, BOARD OF DIRECTORS AND TEAM |
| 03 | 願景及使命 VISION AND MISSION |
| 04 | 創辦人的話 MESSAGE FROM FOUNDER |
| 05 | 營運主任的話 MESSAGE FROM OPERATIONS OFFICER |
| 06 | 專題故事 FEATURE STORY |
| 07 | 我們的受惠者 OUR BENEFICIARIES |
| 08 | 我們的工作 OUR WORK |
| 09 | 我們的中心 OUR CENTRES |
| 10 | 食物及物資援助項目 FOOD AND MATERIAL SUPPORT |
| 11 | 經濟支援項目 FINANCIAL SUPPORT |
| 12 | 教育項目 EDUCATION PROGRAMMES |
| 13 | 強化生命項目 EMPOWERMENT PROGRAMMES |
| 14 | 社區發展項目 COMMUNITY PROGRAMMES |
| 15 | 義工服務及企業社會責任 VOLUNTEERING AND CSR |
| 16 | 籌款活動 FUNDRAISING ACTIVITIES |
| 17 | 財務報告 FINANCIAL REPORT |
| 18 | 活動概覽 EVENTS SUMMARY |
| 19 | 同行的夥伴 DONORS AND PARTNERS |

序言 Preface

啓愛始於傅雅妮小姐開放自己的家給街童寄住，其後在 2012 年開設青年中心，2013 年開設啓愛家庭服務中心，2017 年開設啓愛共融基金永義慈善音樂及食物資源中心 (Meal 惜 Box)，並在 2019 年設立社企啓愛點。2020 年，在新冠肺炎的陰霾下，啓愛堅持提供服務，與基層同行，她的旅程從不間斷。

J Life Foundation started when Ms Elli Fu opened her home to street youths. Later, she opened J Café in 2012, J Life Family Service Centre in 2013, Meal-sic Box in 2017 and J Life Mart in 2019. When the city was under the terror of COVID-19 in 2020, JLife stayed open to continue serving Hong Kong's underprivileged communities. The journey never stops and we continue to nurture more and more underprivileged families.

BOARD OF DIRECTORS AND TEAM

董事會 BOARD OF DIRECTORS

陳帆醫生 Dr. CHAN Fan

陳志樑先生 Mr. CHAN Chi Leung Tony

團隊 TEAM

傅雅妮 創辦人及行政總裁 FU Nga Nei Elli (Founder & CEO)

梁夏萍 營運主任 LEUNG Ha Ping Winnie (Operations Officer)

霍耀強 行政主任 FOK Yiu Keung Jimmy (Administrative Officer)

郭蘊慧 項目主任 KWOK Wan Wai Naomi (Project Officer)

楊家駿 助理項目主任 YANG Ka Chun Charles (Assistant Project Officer)

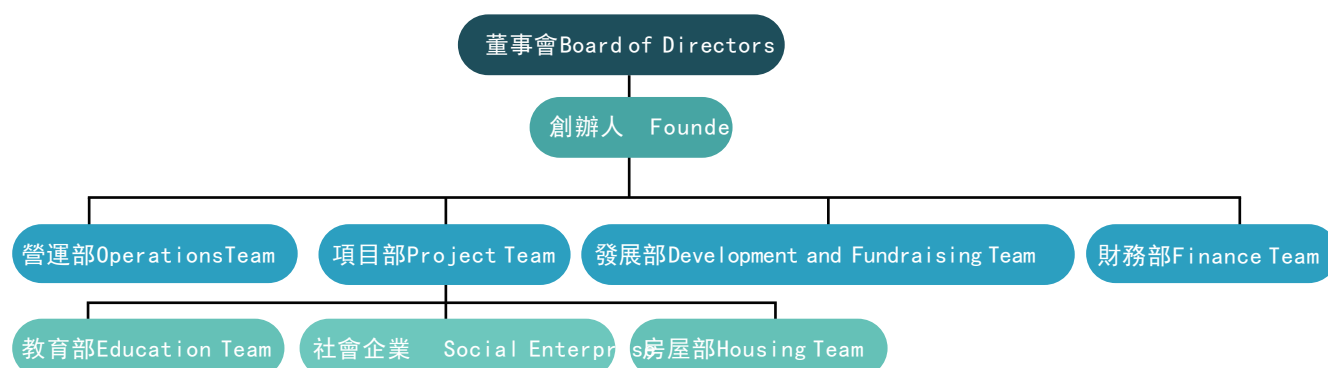
葉楚宜 助理項目主任 YIP Cho Yi Zoe (Assistant Project Officer)

袁英信 助理主任 YUEN Ying Shun John (Assistant Officer)

何健怡 助理項目主任 HO Kin Yi Joanna (Assistant Project Officer)

陳芷婷 助理主任 CHAN Tsz Ting Sara (Assistant Officer)

謝菁慧 會計 TSE Ching Wai Wendy (Accountant)



願景和使命 Vision & Mission

願景

舒緩香港跨代貧窮問題

Vision

To eradicate cross-generational poverty in Hong Kong

使命

食物支援
教育下一代
助人自助

Mission

Feed the poor
Educate the next generation
Help others to help themselves



創辦人的話 Message from the Founder



親愛的啓愛同行者：

啓愛踏入第八年的旅程，這一年真的是不容易走的一年，在今年二月爆發的全球肺炎疫症，當時中心只有半盒口罩，要繼續維持前線服務是一個不容易的決定，最後和團隊商議後，就決定繼續前線服務，而不能在家工作，真的很欣賞整個團隊對基層家庭及社區的委身，齊上齊落，一個都不能少；在這個艱難的時期，百業蕭條，誠心感謝所有基金會、企業、捐贈者的持續捐贈，以致能夠購買「抗疫看保包」等等去幫助基層家庭能維持生計。

這年，我們還和桂洪地產合作，完成了十五個單位，透過社會房屋計劃幫助了十八戶劏房戶遷往中轉房屋「築福里」，讓他們在疫情嚴重下有合適的居住環境，充足的空間學習，發揮所長。

來年，啓愛將繼續向終止香港跨代貧窮的宏大願景前進，現正籌備擴展新的社企項目及啓愛住屋計劃，以培訓更多人才努力。

再次感激每一位曾經幫助深水埗基層家庭的朋友，您們的支持是根治香港貧窮問題不可或缺的一部份。讓我們繼續攜手合作，在衝破疫情、散播愛和希望，留下難忘的一頁！

創辦人及總裁 傅雅妮

Dear Friends,

2020 was J Life's eighth birthday and a difficult year no less. The COVID outbreak since February almost halted our services when we were down to half a box of face masks left. With the dedication to be a constant source of support for our community. That's why we decided to sustain our frontline services with as little disruption as possible. J Life wants to express the utmost appreciation for each and every one of our staff members who did not step back in the face of adversity. In addition, we are more than grateful for all our sponsors who supported our initiatives such as "Kit for Fighting COVID-19" to meet our beneficiaries' basic needs.

This year, we partnered with Kwai Hung Group to supply 15 housing units. Through our transitional housing project, we successfully transferred 18 families who were living in subdivided units to transitional flats, so that they can have a better living environment.

In the future, J Life will continue to work towards the goal of eliminating cross-generational poverty. We are in the process of planning numerous initiatives and housing projects to help foster the next generation.

We thank you all who have helped our grassroots community in Sham Shui Po. You are indispensable in making HK a better and more equitable place. Let's continue to work together to step out of the pandemic and into a brighter future with love and hope.

Elli Fu
Founder & CEO



營運主任的話 Message from the Operations Officer

不經不覺，踏入啓愛大家庭已經七年。我很慶幸能在這裏工作，為眾多家庭打氣，成為他們的同行者。

疫情期間，啓愛家庭面對失業、開工不足、小朋友不能上學等困難，壓力大到透不過氣來。我們隊工也陷入兩難的決擇：若繼續服務，自己會受感染、影響家人，如果中斷服務，家庭所面對的壓力定會加重。結果，當傳姑娘問我們「怕不怕？」時，我們一致決定要繼續。

如是者，啓愛大大改變了食物支援服務的模式；新安排不但比以往耗時間及體力，安排上須更靈活。我本來擔心同事和會員因交流減少而變得疏遠，但這些憂慮都在收到眾多會員所寫的一個個鼓勵訊息時煙消雲散！

希望未來日子，能夠和眾家庭繼續同行，見證更多家庭生命變化。

Time flies and I have been with J Life for 7 years. It is an absolute privilege to work here, to be many families' cheerleader and a part of their life journey.

During the pandemic, J Life families faced immense pressure from underemployment, unemployment and the lack of school time. Our staff members were in a dilemma of fearing for our own safety and maintaining our service level for our members. At the end, when Ms. Fu asked if we wanted to keep going, we all answered "yes" .

As such, J Life adapted to the circumstances and adjusted our food distribution service.

Not only did it take much more effort in terms of planning and communication, it was also very taxing physically. I was worried that the reduced face time with our members would hurt our intimacy, but instead, we received a lot of messages of blessings and encouragement. We were definitely closer than ever before!

I hope that in the future, I can walk alongside these families in the years to come and be part of their change and miracles.

Winnie Leung
Operations Officer

專題故事 1 Cover Story

會員變職員 Beneficiaries who transform into staff

素貞的故事

素貞自九月起成為兼職營運助理，主責「社區資源平台」團購服務的運作。她本來從事飲食業兼職，自疫情嚴重以來，平均每個月只有幾百元的收入。

一開始，素貞是被啓愛同事及義工堅持服務的精神深深打動，幾個月來都定期中心做義工。後來，當中心開展「社區資源平台」時，傅姑娘便邀請了素貞成為負責同事，讓她「趁年輕學多啲嘢」，嘗試文職工作。她由剛入職時的一籌莫展，當中經過梁姑娘等同事耐心指導，現在已能夠處理採購、落單等程序，大大強化自己的能力！



Susan's Story

Susan has been our part-time operation assistant since September, responsible for running our “Community Resources Platform” group buying services. Prior to joining J Life, she had been working part-time in the catering industry. But since the outbreak of the pandemic, her monthly income fell to the hundreds.

Initially, Susan was so deeply moved by the enthusiasm and perseverance of our staff members that she volunteered at our centre once a week without fail. Later, when the “Community Resources Platform” service was developed, Ms. Fu invited Susan to join the staff in order for her to learn clerical work. She started from zero to gradually take on more responsibility with the help of Ms. Leung. She can now independently handle the purchasing, ordering, and recording work. More importantly, she has gained more confidence and self-esteem.

惠芳的故事

惠芳的四口家庭屬於低收入劏房戶，丈夫當餐廳洗碗工，自己在學校派飯，兩名兒子仍然在學，生活十分拮据。疫情下，餐飲業大受影響，學校更是停上實體課，兩夫妻頓時收入大減，十分徬徨。幸得啓愛從未間斷的食物支援服務，讓他們可以「有飯食」，更獲聘為其中一名營運助理，賺取收入幫補家計。惠芳表示，每星期兩日「有工開」令她的生活十分充實，亦從幫助他人的過程中獲得快樂。



Huifang's Story

Huifang belonged to a low-income family of four living in a sub-divided unit. Her husband was a dish washer and she was a meal deliverer of a school. With her two sons still in school, their living conditions were very poor. During the pandemic, the catering industry was badly hit. Together with the suspension of in-person schooling, the couple lost a significant part of income. Thanks to J Life's non-stop food support programme, they were able to receive meals every day. Huifang was even recruited to become one of our operation assistants. Huifang said that she felt very happy to be employed 2 days a week. Most importantly, her life was enriched by her ability to help other people.

清玲的話

我自 2016 年起成為了啓愛的家庭會員，最初申請入會，是希望可以報讀學前班，助不諳廣東話的女兒適應校園生活。加入啓愛大家庭以來，我們除了每星期領取物資外，還參加了其舉辦的各項社區活動。

2020 年，啓愛中心再次為我們家庭帶來驚喜。原本我們住在狹小的劏房，不但天雨會滲水，小朋友更是連書桌也沒有。啓愛的同事見此情況，便安排我們入住「過渡性房屋」，不但環境更寬敞優美，我更可用省下的租金給小朋友上興趣班。

衷心感謝啓愛共融社區中心對我們一家五口的愛。我們最困難的時候，遇上您們充滿愛心的付出和支援，希望我的小朋友將來也會像您們這樣幫助有需要的人。成為啓愛的會員讓我們的生活豐富又精彩。祝您們歡笑同行，再創輝煌，幫助越來越多有需要的人，辛苦您們了。



Words from Ching Ling

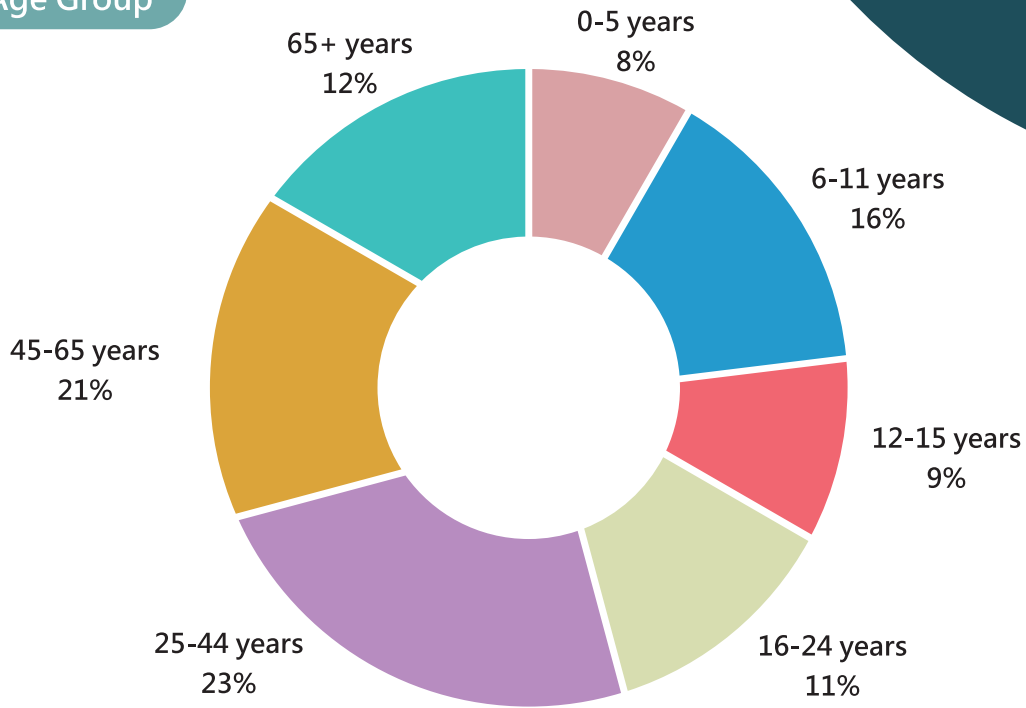
I have been a J Life' s member since 2016. Initially with an aim to prepare my daughter for kindergarten, I enrolled her in the pre-kindergarten class. Since becoming a part of J Life' s big family, we have not only received resources every week, we have also participated in many social events to enrich our lives.

In 2020, J Life surprised our family of 5 by arranging for us to live in "transitional housing" . At that time, we were living in a tiny flat in very poor conditions. Not only would it leak on rainy days, our children did not even have desks. When J Life colleagues came to visit and saw our home, they immediately arranged to apply for "transitional housing" for us to rent at a cheaper price. Not only was the new house better for living, I could also use the saved money to enrol my children in extra-curricular activities.

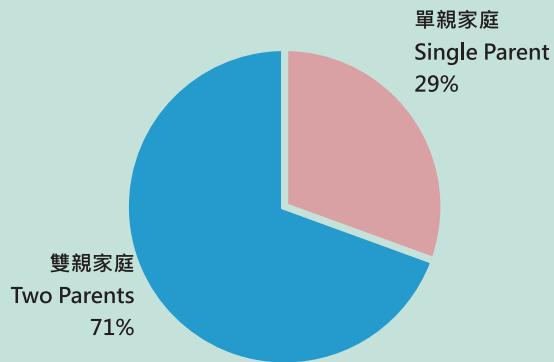
I am very grateful for J Life for their care and love for my family. At a low point in our lives, we were fortunate to receive your support. I hope my children will be able to pay it forward and support the needy in the future. Becoming a J Life member has been a gift and I wish J Life all the best in the years to come.

我們的受惠者 Our Beneficiaries

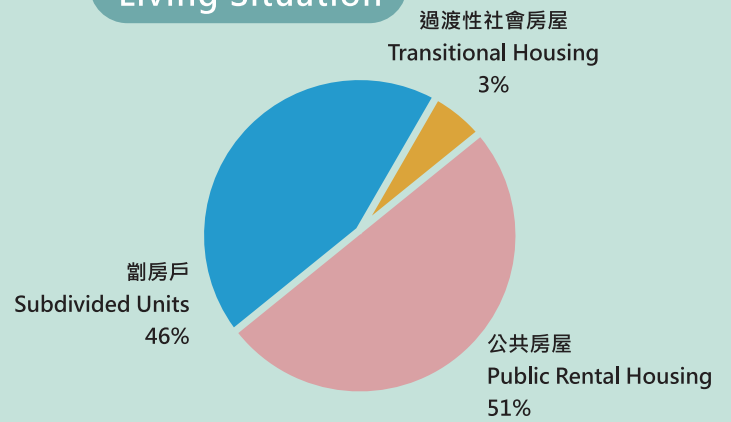
年齡組別 Age Group



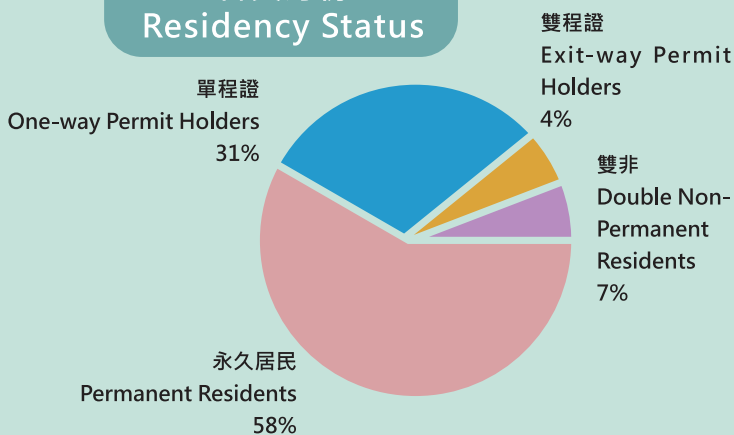
婚姻狀況 Marital Status



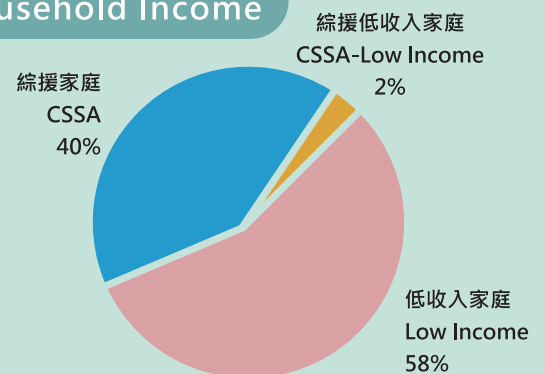
居住狀況 Living Situation



會員身份 Residency Status



經濟狀況 Household Income



我們的工作 Our Work



我們幫助了 Since 2012, we have served :

| | |
|--|-------|
| 會員家庭 Underprivileged Member in Family Units | 1,159 |
| 新會員家庭 New Underprivileged Member in Family Units | 52 |
| 受助兒童 Underprivileged Children | 1,272 |
| 受助青年 Underprivileged Youths | 614 |
| 受助長者 Underprivileged Elderlies | 403 |
| 南亞裔人士 Underprivileged Southeast Asians | 205 |
| 露宿者 Homeless People | 100 |

年度支援工作記錄 (1/1/2020 – 31/12/2020)

| | |
|---|--------|
| 長者飯餐數量 (飯盒) Number of Hot Meals Distributed to Elderly (in boxes) | 12,300 |
| 課堂堂數 No. of Classes Conducted | 421 |
| 課堂總出席人次 Total Class Attendance | 3,429 |
| 家庭探訪 No. of Home Visits to Families | 31 |
| 2020 年度總受惠人次 Number of Beneficiaries in 2020 | 52,269 |
| 年度啓愛會員義工總人數 J Life Member Volunteers | 30 |
| 啓愛會員義工總服務次數 J Life Member Volunteer Attendances | 551 |
| 個人及機構義工總服務次數 Youth, Individual and Corporate Volunteer Attendances | 200 |
| 非啓愛會員義工時數 Number of Hours volunteered by non-J Life members | 920 |

我們的中心 Our Centres

八年間，啓愛由一間發展到四間服務中心：

- 2012年：J Café，青年中心
- 2013年：J Life Foundation，辦公室及家庭服務中心
- 2017年：Meal 惜 Box，音樂及食物資源中心
- 2018年：啓愛點，社會企業

Within an 8-year period, J Life has expanded from one to four centres:

- 2012: J Café, Youth centre
- 2013: J Life Foundation, Family Service Centre and headquarters
- 2017: Meal-sic Box, Music and Food Resources Centre
- 2018: J Life Mart, Social Enterprise





食物及物資援助項目 Food & Material Support

新冠病毒疫情令香港基層市民的經濟及居住環境雪上加霜。啓愛自疫情初期以來，從未實施「在家工作」安排，一直堅守在最前線，為基層市民提供最急需的服務。

COVID-19 hit Hong Kong hard and pushed underprivileged communities into dire situations. Since the start of COVID-19, J Life has never adopted a “work-from-home” arrangement and has stayed on the frontline in order to serve the underprivileged.

疫情無情，啓愛有愛

(Bank of America Charitable Foundation、Rusy and Purviz Shroff Charitable Foundation、愛心聖誕大行動 2020、香港交易所慈善基金、The Hong Kong Community Recovery Fund、陶哲甫及陶潘麗瑤基金有限公司、Sui Yun Christian Fund、富國銀行公司及陳瑞球家族福利及慈善基金有限公司) * 所有有關疫情支援的食物及物資援助項目。

J Life @ Fighting COVID-19

(Bank of America Charitable Foundation, Rusy and Purviz Shroff Charitable Foundation, Operation Santa Claus 2020, HKEx Foundation (2nd round), The Hong Kong Community Recovery Fund, C.F. & Nancy Tao Foundation, Sui Yun Christian Fund, Wells Fargo & Company, Chan Siu Kau Family Benefits and Charitable Foundation Ltd)



* 所有有關疫情支援的食物及物資援助項目。

*All projects which were COVID-19 themed food support programmes.

因應疫情令酒店業減少剩餘食物，以及政府推出多項社交隔離措施，啓愛於食物及物資援助上作出相應措施，包括：

- 1) 讓 2-8 個會員在門口按時間排隊拿取物資
- 2) 增加購買食物，應付基層的需要
- 3) 增加急凍食品及減少罐頭食品
- 4) 派發防疫用品 (如 口罩、搓手液)

With the reduction in leftover food donations due to the economic blow in the hotel industry and the government's various social distancing policies, J Life with great flexibility adopted the following measures regarding our Food and Material Service including:

- 1) Assigning members to collect food packs at specific timeslots in groups of 2-8
- 2) Using our operating funds to purchase food to make up for the reduction in leftover food donations
- 3) Increasing the proportion of frozen food and reduce canned food to maintain a healthier diet
- 4) Distributing more hygiene products (e.g. masks, hand sanitizers)

這些措施需要同工長時間在室外日晒雨淋，消耗大量的體力，更需要靈活彈性地處理各樣突發的事。對會員來說也是重大挑戰，尤其是我們要求長者有序排隊及會員按群組信息指示取物資等，都是全新的安排。種種安排，使團隊會員維持緊密的溝通。

These additional measures required our staff to work outdoors and significantly increase our working hours, thereby increasing the physical demands on our staff. To cope with the changing government policies, our staff and members had to work in tandem and stay in close communication.

豬肉卷 (震宇迪生 (香港) 有限公司)

Pork Vouchers (Universal DPL)

我們繼續與本地的豬肉檔合作，使會員能用豬肉卷換取新鮮豬肉供給家人。
We partnered with local butchers to give pork vouchers to our families which could be used to purchase fresh meat.





經濟支援項目 Financial Support

很多基層人士從事餐飲業、零售業等在疫情下受重創的行業，他們因為失業、開工不足，或要在家照顧子女而辭去工作而面對家庭收入減少的问题。

Many of the grassroots breadwinners worked in the catering or retailing industry which suffered a severe blow in the pandemic. They faced financial problems due to unemployment and underemployment. Some of them were even forced to leave their jobs as they needed to take care of their children who stayed at home for longer hours.

新鴻基「天恩種子計劃」緊急援助計劃 (TPK Kwok Charitable Fund)

“Amazing Seed” Emergency Fund for Low-income families (TPK Kwok Charitable Fund)

基層家庭持續面對收入不穩及減少的問題，即使他們節衣縮食，仍然入不敷支，須靠有限的積蓄過活。新鴻基地產有限公司設立了「天恩種子計劃」，發放援助金給低收入家庭，紓緩他們的燃眉之急。



Many families faced reduced and unstable income during COVID-19. They could not earn enough even if they skimped on their daily expenses and had to live on their savings. In view of this, SHK Properties launched the “Amazing Seed” Emergency Fund project to give out money to relieve their financial burden.



劏房戶電費支援 (愛心聖誕大行動 2020)

Electricity Bill Subsidy for Subdivided-flat Households (Operation Santa Claus 2020)

疫情下，劏房戶有更多時間留在家中，所耗費的電力和電費比往常更多。我們感謝愛心聖誕大行動 2020 資助劏房戶的電費，減輕他們的負擔。

Subdivided-flat households shouldered a heavy financial burden. During the pandemic, they spent longer hours at home, leading to higher electricity consumption and costs. We thank Operation Santa Claus 2020 for sponsoring their electricity bills.

教育項目 Education Programme

疫情下，學校紛紛轉為網上教學，令教學進度大大減慢。啓愛很快把各項學術班轉為網上課堂，以及盡量在疫情放緩時安排實體課程，以提高教學質素及擴闊同學的學習體驗。

Schools switched to online mode under COVID-19, drastically hindering learning progress. J Life swiftly switched between online mode and face-to-face mode to enhance learning quality and experience.

小學生課後功課輔導班 (法國巴黎銀行集團)

After-school Homework Tutoring for Primary Students (BNP Paribas)

中心為 20 位基層小學生提供課後功課輔導班。疫情期間，啓愛迅速安排了網上功課輔導班，並逐一指導家長使用相關軟件。我們亦根據同學復課情況安排實體功課輔導班，把同學分配到不同時段到中心上課。

We provided after-school homework tutoring classes for 20 primary students. During COVID-19, we quickly taught the parents to use Zoom and arranged online homework tutoring. We also flexibly switched to face-to-face mode for classes according to the Education Bureau's announcements. We divided the students into smaller groups and sanitised our centre between sessions to ensure a hygienic environment.



中文、英文及數學補習班 (美國銀行) Subject Tutoring (Bank of America)

我們為 70 位中、小學生舉辦中、英、數學科補習班，為他們提供額外的學習支援。疫情期間，我們亦繼續為他們提供網上課堂。

We organised Chinese, English and Maths tutoring classes for 70 secondary and primary school students to provide extra academic assistance to them. We continued the classes online during COVID-19.

幼兒班 (新鴻基地產有限公司)

Pre-school classes (Sun Hung Kai Properties)

中心亦為 16-32 個月大的幼兒開設幼兒班。疫情下，我們把課堂由實體小組 5-6 人小組轉為網上 2-3 人小組上堂，讓幼兒在家繼續培養全方位能力。

We provided pre-school classes for children aged 16 to 32 months. During the pandemic, we switched from group classes of 5-6 kids to 2-3 kids in online classes to continue children's learning in multiple skills.



STEM 課程 (美國銀行)

STEM (Bank of America)

我們舉辦了 STEM 班，涵蓋編程、機械人等課程，讓新一代可以增強其「數位素養」。此課程共有 16 位小學生受惠。

We organized STEM classes covering topics such as programming and robotics to increase the next generation's technological sensibilities. There were 16 primary school students in this programme.

表達藝術治療工作坊 (滿億有限公司)

Expressive Arts Therapy Workshop (Moon Yik Company Limited)

我們與「一樓畫室」合作，舉辦了表達藝術治療工作坊，為 6 位兒童 (包括有特殊學習需要的學童) 營造舒服的環境，透過唱歌、繪畫和玩遊戲，學習與他人相處及適當表達情緒。

We partnered with PopsArt to organize expressive arts therapy workshops for 6 children (including children with special educational needs). Through providing a comfortable environment, singing, drawing and playing games, the children learned to express their emotions and cope with people.





強化生命項目 Empowerment Programme

啓愛開展了不同強化生命項目，包括鼓勵就業、提供工作機會及職業培訓，和生活技能訓練，以提升受惠者的競爭力及自強意識。疫情期間，這些計劃持續進行，更開拓了新的機會。

J Life empowered its beneficiaries by providing a work incentive scheme, job opportunities and vocational training, as well as life skills training. During COVID-19, we continued these empowerment programmes and also opened up new opportunities.

啓愛點 (周大福慈善基金)

J Life Mart (Chow Tai Fook Charity Foundation)

「啓愛點」是啓愛的社企，為婦女會員及青年提供就業機會及培訓。疫情期間，「啓愛點」照常營業，並在不同網上平台開設了網上商店，更開展了售賣單車的業務。2020年，我們售出超過400部單車。Branded as J Life's social enterprise, J Life Mart provided our women members and youngsters with job opportunities and training. In the course of the pandemic, J Life Mart maintained business as usual, and even launched its online shop and started selling bicycles. In 2020, we sold over 400 bicycles.



針織班 (美國銀行)

Crochet and Knitting Classes (Bank of America)

我們鼓勵婦女會員持續學習。2020年，我們舉辦了針織班，教導了15位婦女製作不同手工作品。婦女可把製成品寄賣於社企「啓愛點」，在學習針織技巧的同時賺取收入。

We encouraged our women members to continuously learn and upgrade their skill sets. In 2020, we organized Crochet and Knitting classes for 15 women members to make handiwork and crafts. Their pieces were sold at J Life Mart, earning them an income.

貢享與同行 (新鴻基地產有限公司及賀峰有限公司)

Live & Share (Sun Hung Kai Properties, Horfull Limited)

啓愛針對基層青年人，於2018開展了「貢享與同行」計劃，人生導師透過「共住」深入了解及培養基層青年自理能力、情緒管理及社交技巧。

J Life Foundation implemented the Live & Share programme in 2018. The Life Coaches in this programme build in-depth relationships with teenagers and cultivate their self-care ability, emotional management and social skills.



心深連動 (周大福慈善基金)

"Heart-to-heart" Grassroots Family Support Fund Project (Chow Tai Fook Charity Foundation)

「心深連動」是周大福慈善基金於2018年開展的計劃，目的為資助基層學生補習及興趣班的學費及鼓勵婦女投入社會勞動力。2020年，此計劃幫助了30個低收入家庭。

"Heart-to-heart" is a programme founded by Chow Tai Fook Charity Foundation in 2018. It aims to sponsor the fees for tutorial and interest classes of grassroots students, and encourage women to participate in the labour force. In 2020, this programme helped 30 low-income families.

社區物資平台 (The Hong Kong Community Recovery Fund)

Community Resource Platform (The Hong Kong Community Recovery Fund)

自強及回饋社會是啓愛中心重要的價值。我們訓練會員，讓她們能夠在網上及商舖格價，同時為基層家庭已團購優惠購入日用品，服務他人。

Empowerment and giving back to the community are core values to J Life. We trained our members to help look for the lowest prices or good bargains on internet shopping platforms, then combined orders with other members and purchased large quantities to enjoy group discounts.



聘請婦女作為營運助理 (利希慎基金)

Operations assistants (Lee Hysan Foundation)

由於程序轉變，啓愛需要更多人手去協助處理物資。因此，啓愛聘請了三位婦女為營運助理，去負責接收及存放物資、派發物資、維持秩序。

Due to procedural adjustments, J Life required more manpower to handle material donations. To cope with the increased workload, J Life hired 3 women as operations assistants to handle the stock taking and storage. They were also responsible for distributing the resources and maintaining the order.



keep looking for new friends
in order to find confidants.



今天好感謝來自善心人的恩賜。

也感謝中心的社工及姑娘們的幫助。

內心裏滿滿的感激。

從這刻開始“天恩的種子”也種下。

告誡自己，人不止只接受，有能力時不分

大小，也要賦予，同時也會跟小朋友

說：心中要有愛，常懷感恩，當有能

力時，也要伸出援手。

因為施比受更有福



社區發展項目 Community Programme

啓愛一直致力為基層社群提供網絡資源，以營造更健康、更和諧的社區。2020年，很多外展計劃因疫情而暫停舉行，社區發展項目集中於房屋相關項目。

J Life has continued to provide network resources to our beneficiaries in hopes of creating a healthier and harmonious community. In 2020, a lot of our outreach programmes were halted due to the pandemic therefore our focus was on housing-related projects.

共享與同行 生命有可能 (公益金)

Community Housing Project (The Community Chest)

2020年，啓愛與桂洪地產合作，擴大了「社會房屋」的營運規模至共22個單位，為19個家庭提供較經濟實惠及寬敞的過渡性房屋，及安排家訪、工作坊、聖誕派對等活動，改善家庭的理財能力及人際關係。In 2020, J Life cooperated with Kwai Hung Group, and the scale of operation of the community houses was expanded to 22 units. We have provided 19 families with more affordable and spacious transitional flats. Home visits, workshops and festive activities were arranged to improve the family's financial management and interpersonal relationships.



關愛基金「為低收入劏房住戶改善家居援助計劃」

Community Care Fund "Assistance Programme to Improve the Living Environment of Low-income Subdivided Unit Households"

啓愛是此項目的營運機構之一。此計劃提供一筆過非現金資助的津貼，為低收入劏房住戶進行簡單家居改善/維修、購買傢俬及家用物品和滅蟲滅蟲服務來改善他們的居住環境。

J Life is one of the service operators under the programme. The programme provides a one-off subsidy in kind for carrying out minor improvement/repair works, purchasing furniture and household goods and/or pest control services.

GERMAGIC 塗層 (利希慎基金)

GERMAGIC Disinfection Service (Lee Hysan Foundation)

利希慎基金的資助 60 個劏房戶獲得由「香港科技大學—捷和實業有限公司創新環境健康技術聯合實驗室」研發的新型多層次抗病毒塗層 GERMAGIC™ THYME 清潔服務，深入徹底地進行清潔，不僅令受惠家庭得到持續性的保護，更令他們家居的空氣更清新，呼吸更暢順。

Lee Hysan Foundation sponsored 60 families living in subdivided units to receive GERMAGIC THYME anti-virus coating services developed by "HKUST-CIL Joint Laboratory of Innovative Environmental Health Technologies". This service gave long-term protection against viruses and fresh indoor air quality.

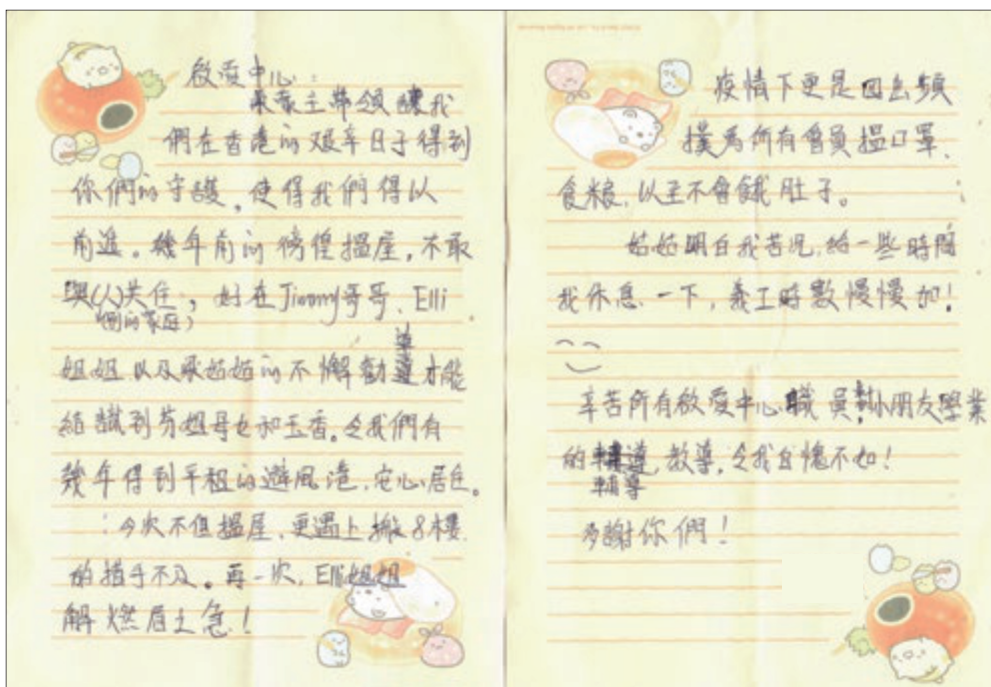


Youtube 頻道

Youtube Channel

啓愛開設了 Youtube 頻道「啓愛娛樂台」，並製作了一共七部短片，透過鼓勵話語及音樂，將正能量帶給啓愛家庭。

J Life started a YouTube channel "J Life entertainment channel" and produced 7 videos that brought positive energy to J Life families through encouraging messages and music.



義工服務及企業社會責任 Volunteering and CSR

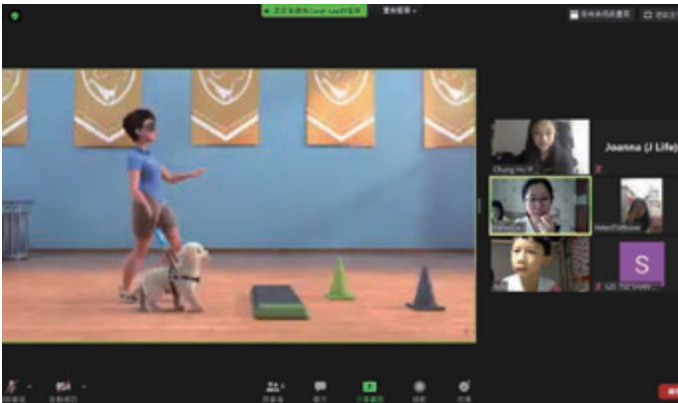
長者飯盒 (新鴻基地產)

Elderly hot meal (Sun Hung Kai Properties)

新鴻基慈善基金幫助在旗下的酒店中供應新鮮飯盒，並即日送到啓愛中心贈予長者。在 2020 年 5 月至 12 月期間，新鴻基共送出 8550 個飯盒到啓愛，把社會對長者的關懷傳送至長者的手中。



SHK Properties Charitable Fund Limited prepared fresh meal boxes from the kitchens of its hotels and delivered them to J Life for consumption by our elderly members. From May to December 2020, SHK delivered a total of 8550 meal boxes to J Life. They were a tremendous support to the elderly members of our society in times of difficulty.



暑期網上趣味英文班 (美國銀行、法國巴黎銀行集團)

Summer Online English Class (Bank of America, BNP Paribas)

我們分別和 BofA 及 BNP 合作，為合共 30 位小學生籌辦了共三期網上英文班，讓同學在家中通過看影片、小組討論等活動，輕鬆學習英文及良好品德。

During COVID-19, primary school children lacked help in learning English. Therefore, we held 3 series of Summer Online English Class (2 with BofA, 1 with BNP) for them. They learned English and good values through activities like video-watching and group discussion.

「智趣寶」(香港扶輪社)

Education Kit (Rotary Club)

啓愛為基層學生籌募得 204 部平板電腦。這些設備不僅幫助 250 個會員子女，也幫助鄰近學校超過 50 名學生。

J Life was successful in sourcing donations of 204 tablet computers. The above donations not only helped 250 children of member families, but also 50 students within our community.



迪士尼「奇妙夢想城堡」之旅

Hong Kong Disneyland "Castle of Magical Dreams" Tour

2020年11月，香港迪士尼樂園趁着疫情緩和的日子，邀請了啓愛一眾家庭，到迪士尼樂園享受一個奇妙之旅，更獲邀優先參觀重新開放的「奇妙夢想城堡」及相關展覽。 In November 2020, Hong Kong Disneyland invited J Life and their families for a magical visit with the easing up of the pandemic restrictions. We were even among the first in Hong Kong to see the newly refurbished "Castle of Magical Dreams" and the relevant displays.



美國會所鄉村俱樂部日營

Day Camp at the American Club

2020年初，美國會邀請了20位小朋友到其美國會所鄉村俱樂部遊玩，體驗會所設施及活動，如桌球、攀石、網球體驗等。 At the start of 2020, the American Club invited 20 children to their country club for a day camp to enjoy the facilities and activities, such as snooker, rock climbing and tennis.

菲臘牙科醫院

(城市的盼望基金有限公司)

Prince Philip Dental Hospital (Hope of the City Foundation Limited)

城市的盼望基金有限公司資助40名中學生到菲臘牙科醫院接受牙科保健、補牙等服務。 Hope of the City Foundation Limited sponsored 40 secondary school students for dental services in Prince Philip Dental Hospital.



PPP-400-01 空氣清新機 (真毅環境科技有限公司 x 迪臣國際醫學儀器有限公司)

Green Breeze PPP-400-01 (Green Breeze Limited, Medical Technologies Limited)

啓愛獲得來自真毅環境科技有限公司及迪臣國際醫學儀器有限公司共贊助的 8 部 Green Breeze PPP-400-01 空氣淨化機及 12 部 Green Breeze PPP-50-01 空氣淨化機，供啓愛 4 間中心及 12 個劏房家庭使用，保持我們的工作環境及家庭的家居清新無菌。

J Life received 8 Green Breeze PPP-400-01 air purifiers and 12 Green Breeze PPP-50-01 air purifiers. They were deployed in our 4 centres and 12 subdivided units of our member families to keep the air fresh and germ-free.



冰鮮黃油雞 (中銀人壽)

Frozen Chicken (BoC Life)

中銀集團人壽保險有限公司 (中銀人壽) 近農曆新年間，捐出冰鮮黃油雞近 1005 份，讓基層家庭及長者可以開心過新年！

BoC Life donated 1005 frozen chickens during the Chinese New Year holiday, giving our underprivileged families and elderly a happy new year!





籌款活動 Fundraising Activities

愜意咖啡會有限公司

Cozy Coffee Company Limited

自開業以來，愜意咖啡會有限公司每售出一杯咖啡，都會捐贈 \$1 收益予啓愛。2020 年，其第三間分店開張，為更多地區的人送上優質的咖啡！

Since the start of their business, Cozy Coffee has donated \$1 to J Life for each cup of coffee sold. With the opening of their 3rd branch, they will get to serve more delicious coffee.



義賣會

Aanya Life Charity Christmas Bazaar

Aanya

我們感謝 Aanya 時裝店邀請啓愛到其 Aanya Life Charity Christmas Bazaar 義賣會，讓我們可以展示及售賣受惠婦女的手工藝作品，並向中環區的消費者介紹啓愛的工作及理念。

We sincerely thank Aanya for inviting J Life to participate in their Aanya Life Charity Christmas Bazaar, giving us the opportunity to showcase the craftsmanship of our women beneficiaries as well as introduce J Life's work and mission to customers in Central district.

開雲集團前亞太區行政總裁鄧婉穎

MiMi Tang, Ex-CEO of Kering's Asia and Pacific Region

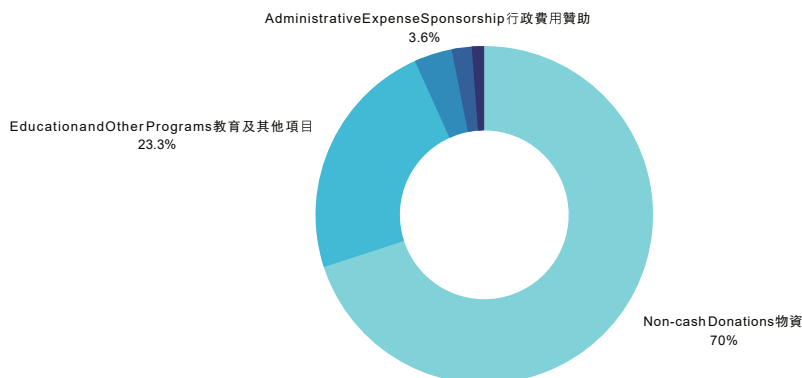
鄧婉穎女士自退休以來熱心慈善，出錢出力支持啓愛及基層人士。2020 年，她捐贈了防疫物資及親自到場派發飯盒。她亦捐贈自製的漂染 T 恤予啓愛點售賣，並把收益全數捐贈給啓愛中心。

Ms. MiMi Tang has devoted herself to charity since her retirement by donating money and time to J Life and our beneficiaries. In 2020, she donated hygiene products and personally delivered meal boxes in our centre. She also donated her handmade tie-dye T-shirts to J Life Mart for sale and the proceeds thereof to J Life.



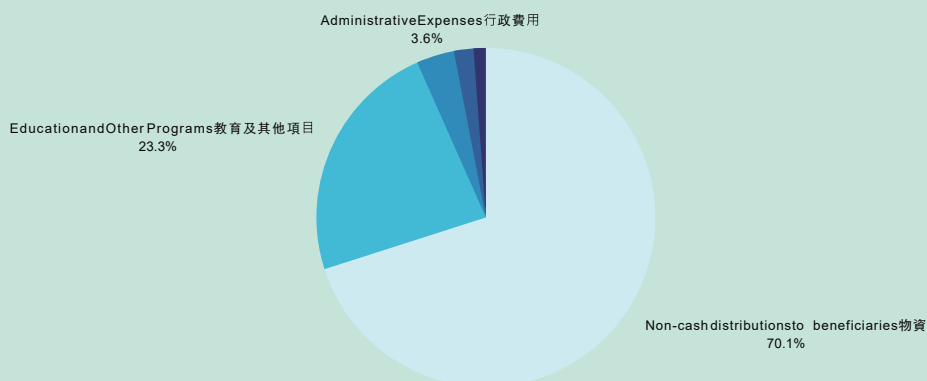
財務報告 Financial Report

收入來源 Donation Sources



| | |
|---|----------------|
| Designated Donation – Non-cash Donations 物資 | HK\$13,113,671 |
| Designated Donation – Education and Other Programs 指定捐款 – 教育及其他項目 | HK\$4,360,097 |
| Designated Donation – Administrative Expense Sponsorship 指定捐款 – 行政費用贊助: | HK\$681,375 |
| Other Income 其他捐款 | HK\$359,215 |
| Designated Donation – Community Programs 指定捐款 – 社區項目 | HK\$222,895 |
| Total 合共 | HK\$18,737,252 |

支出 Expenses



| | |
|--|----------------|
| Non-cash distributions to beneficiaries 物資 | HK\$13,113,671 |
| Education and Other Programs 教育及其他項目 | HK\$4,360,097 |
| Administrative Expenses 行政費用 | HK\$675,395 |
| Services 服務 | HK\$349,661 |
| Community programs 社區項目 | HK\$218,235 |
| Total 合共 | HK\$18,717,058 |

活動概覽

Events Summary

| 月份 /Month | 活動 /Activities | 贊助商與夥伴 / Sponsor and Partnerships |
|-----------|---|--|
| 一月 /Jan | 狂玩美國會所鄉村俱樂部 Day Camp in ACF Clubhouse | 美國會所 The American Club Foundation |
| 十月 /Oct | 中學生牙科保健 Dental Care for Secondary School Students | 菲臘牙科醫院 Prince Philip Dental Hospital 城市的盼望基金有限公司 Hope of The City Foundation Limited |
| 十一月 /Nov | 「奇妙夢想城堡」之旅 “Castle of Magical Dreams” Tour | 香港迪士尼樂園 Hong Kong Disneyland |
| 十一月 /Nov | 安雅聖誕義賣會 Aanya Christmas Charity Bazaar | 安雅聖誕慈善 Aanya Life Charity Christmas Bazaar |

同行的夥伴 Donors and Partners

捐贈者

Donors

| | |
|------------------|---|
| 7-11 便利店 | 7-Eleven |
| 荷蘭銀行 | ABN AMRO Bank N.V. |
| 艾奕康 | AECOM |
| 美亞保險 | AIG Insurance Hong Kong Limited |
| 香港美國俱樂部基金會 | American Club Foundation(ACF) |
| 美國國際集團 | American International Group, AIG |
| 艾橋生物科技集團有限公司 | AQ BIO TECHNOLOGY GROUP LIMITED |
| 高富金融集團 | Athena Best Financial Group |
| 愛培自閉症基金 | Autism Partnership Foundation |
| 美國銀行 | Bank of America |
| 中國銀行(香港)有限公司 | Bank of China (Hong Kong) Limited |
| 法國巴黎銀行 | BNP Paribas |
| 中銀人壽 | BOC Life |
| 陶哲甫及陶潘麗瑤基金有限公司 | C.F. & Nancy Tao Foundation Limited |
| 陳瑞球家族福利及慈善基金有限公司 | Chan Sui Kau Family Benefits and Charitable Foundation Limited |
| 卜蜂國際 | Charoen Pokphand Foods Public Company Limited(CPF) |
| 周凱旋基金會 | Chau Hoi Shuen Foundation Limited |
| 周大福慈善基金有限公司 | Chow Tai Fook Charity Foundation Limited |
| 合保實業有限公司 | Consonant Industrial Limited |
| 康和電機有限公司 | Cornwall Contracting Company Limited |
| 康和電器工程有限公司 | Cornwall Electrical Engineering Limited |
| 愜意咖啡會有限公司 | Cozy Coffee Club Limited |
| 永義慈善基金會有限公司 | Easyknit Charitable Foundation Limited |
| | EMCO Novus International Limited |
| 施文律師行 | F. Zimmern & CO. Ltd(F. R. ZIMMERN LIMITED) |
| 福基國際工業股份有限公司 | Foodgears Industrial International Ltd |
| 費森尤斯香港有限公司 | Fresenius Kabi Hong Kong Ltd. |
| 傅德蔭基金有限公司 | Fu Tak lam Foundation Limited |
| 信越控股有限公司 | G & M Holdings Limited |
| 真毅環境科技有限公司 | Green Breeze Limited |
| 香港青年獎勵計劃 | HKAYP |
| 霍金路偉律師行 | Hogan Lovells |
| 香港 01 | Hong Kong 01 |
| 香港港安醫院 | Hong Kong Adventist Hospital |
| 香港業餘冰球會 | Hong Kong Amateur Hockey Club Limited |
| 香港會基金 | Hong Kong Club Foundation Limited |
| 香港社區基金 | Hong Kong Community Foundation |
| 香港迪士尼樂園 | Hong Kong Disneyland Hongkong International Theme Parks Limited |

捐贈者

Donors

| | |
|-------------------|---|
| 香港養和醫院 | Hong Kong Sanatorium & Hospital |
| 益力多乳品有限公司 | Hong Kong Yakult Company Limited |
| 中國工商銀行(亞洲) | ICBC |
| IG集團 | IG Group |
| 海景嘉福洲際酒店 | InterContinental Grand Stanford Hong Kong, an IHG Hotel |
| 摩根大通 | J.P. MORGAN |
| 鐸信有限公司 | John Lam & Associates Limited |
| | John Masters Organics |
| | Kadoorie Charitable Foundation(KCF) |
| | Kimberly-Clark (HK) Ltd |
| 應力工程有限公司 | KPA Engineering Limited |
| 蘭桂坊酒店 | Lan Kwai Fong Hotel |
| 瑞生國際律師事務所 | Latham & Watkins LLP |
| 利希慎基金有限公司 | Lee Hysan Foundation |
| 香港深水埗獅子會有限公司 | Lions Club Of Sham Shui Po Hong Kong Limited |
| | Little Fitting Room |
| 小木屋工作室有限公司 | Little Wood Studio Limited |
| 羅鷹石慈慧積金 | Lo Ying Shek Chi Wai Foundation |
| | Macquarie Investment Management Limited |
| 美心集團 | Maxim's Caterers Limited |
| 迪臣國際醫學儀器有限公司 | Medical Technologies Limited |
| 奧恩國際幼稚園 | Mighty Oaks International Nursery and Kindergarten |
| | Mission Possible Foundation Limited |
| 新食品時代有限公司 | New Food Era Company Limited |
| 黃廷方慈善基金有限公司 | Ng Teng Fong Charitable Foundation Limited |
| | Nicole's Kitchen Company Limited |
| 新創建集團有限公司 | NWS Holdings Limited |
| 愛心聖誕大行動 | Operation Santa Claus |
| | Optimas Foundation Limited |
| 太盟投資集團 | PAG Consulting Limited |
| 電訊盈科 | PCCW |
| 半島商品有限公司 | Peninsula Merchandising Limited |
| Peter Bennett 基金會 | Peter Bennett Foundation |
| 一樓畫室有限公司 | PopaArt Limited |
| | Ralph Lauren Asia Pacific Limited |
| 讓社會服務基金有限公司 | RANG SS Foundation Limited |
| | Rotary Club of Hong Kong |
| 聖安娜餅屋 | Saint Honore Cake Shop Limited |
| 正愛慈善基金會有限公司 | Seal of Love Charitable Foundation Limited |
| 老友記慈善農莊有限公司 | Senior Buddy Charity Farm Limited |
| 港協暨奧委會奧夢成真有限公司 | SF&OC Sports Legacy Company Limited |
| 信和集團 | Sino Group |
| 一起微笑有限公司 | Smile with us HK Limited |
| | Sophos Hong Kong Company Limited |
| 南華早報 | South China Morning Post |
| 寶光實業國際有限公司 | Stelux Holdings International Limited |
| 新鴻基地產有限公司 | Sun Hung Kai Properties Limited |
| 太古地產有限公司 | Swire Properties Limited |

捐贈者

Donors

| | |
|------------------|---|
| 電視廣播有限公司 | Television Broadcasts Limited(TVB) |
| | Temple Chambers |
| 香港美國會 | The American Club Hong Kong |
| 鷹君集團有限公司 | The Great Eagle Holdings Limited |
| 香港會基金 | The Hong Kong Club |
| 香港社會服務聯會 | The Hong Kong Council of Social Service |
| 香港建築師學會 | The Hong Kong Institute of Architects |
| 香港帝苑酒店 | The Royal Garden Hong Kong |
| | The Wee Bean |
| 君峰國際有限公司 | Timberport International Limited |
| 娛藝院線有限公司 | U A Cinema Circuit Limited |
| U 周刊 | U Magazine |
| Unir 酒店有限公司 | Unir Hotels Pty Ltd |
| 震宇迪生 (香港) 有限公司 | Universal Dpl (HK.) Co., Ltd. |
| 香港百宜有限公司 | Universal Robina Corporation HK |
| | USANA True Health(Hong Kong) Foundation Limited |
| 慧妍雅集 | Wai Yin Association |
| 領盛國際有限公司 | Well Synergy International Limited |
| 富國銀行集團 | Wells Fargo & Company |
| 榮華慈善基金 | Wing Wah Charity Foundation |
| 穎語有限公司 | Wing's Share Company Limited |
| 冠利鈕扣行有限公司 | Winner Button Company Limited |
| 智和有限公司 | Wise Peace Limited |

合作夥伴

Partners

| | |
|---|---|
| 東海堂 | Arome Bakery |
| 基督教巴拿巴愛心服務團有限公司 | Barnabas Charitable Service Association Limited |
| 希望之盒 | Box of Hope |
| 建。祝義工隊 | Build & Wish Voluntary Team |
| Burt's Bees HK | |
| 大家樂 | Café de Coral |
| CATCH Pamper & Playdate | |
| 國泰航空有限公司 | Cathay Pacific Airways Limited |
| 祥騰 | Cheong Tang Fashion Wholesale |
| 中聖書院 | China Holiness College |
| 基督教關懷無家者協會 | Christian Concern For The Homeless Association |
| 荃新天地 | City Walk |
| 拔萃男書院 | Diocesan Boy's School |
| English for Asia Limited | |
| 尚品 365 有限公司 | Enjoy 365 Limited |
| 環境及自然保育基金 | Environment and Conservation Fund |
| 樂餉社有限公司 | Feeding Hong Kong Limited |
| 惜食堂 | Food Angel |
| 膳心連基金有限公司 | Foodlink Foundation Limited |
| 膳動衡 | FOODSPORT |
| 香港國際全備福音商人團契 | Full Gospel Business Men's Fellowship International (Hong Kong) |
| 康恩有限公司 | Grace Cup Company Limited |
| 哈羅香港國際學校 | Harrow International School Hong Kong |
| Health Hong Kong Chinese Medicine Centre | |
| 樓上燕窩莊有限公司 | HK Jebn Limited |
| HKAIH HKAHC Channel (Hong Kong Amateur Hockey Club) | |
| 民政事務總署 | Home Affairs Department |
| 匡智會 | Hong Chi Association |
| 香港寬頻有限公司 | Hong Kong Broadband Network |
| 香港足球會 | Hong Kong Football Club |
| 香港美心西餅 | Hong Kong Maxim's Cake |
| 香港榮華餅家 | Hong Kong Wing Wah Cake Shop |
| 香港山崎麵包有限公司 | Hong Kong Yamazaki Co.Limited |
| 城市的盼望基金有限公司 | Hope of The City Foundation Limited |
| Island Evangelical Community Church(Island ECC) | |
| 香港樂心會 | Life Commitment Charity Club |
| 奇華餅家有限公司 | Kee Wah Bakery |
| 建懋建築工程有限公司 | Kingswell Construction & Engineering Co., Ltd |
| 萬寧 | Mannings |
| 馬莎百貨 | Marks and Spencer |
| 現代教育 | Modern Education |
| 森川弁当 | Morikawa Bento |
| 音樂兒童基金會 | Music Children Foundation Limited |
| 幫寶適 | Pampers |

合作夥伴

Partners

| | |
|-----------------------------|---|
| 祝福大行動 | Peace of Box |
| 彩虹基金有限公司 | Rainbow Foundation Limited |
| 勁億發展有限公司 | Razor Glory Building Maintenance Limited |
| 義騎 | Righteous Rider |
| 樂雅兒玩具(香港)有限公司 | Royal Toys (HK) CO., Limited |
| 聖公會聖基道兒童院 | S.K.H. St. Christopher's Home Limited |
| 星巴克 | Starbucks Coffee Company |
| 超藝企業(亞洲)有限公司 | Sup-Prem (Asia) Ltd. |
| 耀陽行動 | Sunshine Action |
| 善幫愛聯盟有限公司 | Symbol Of Alliance Limited |
| 香港基督少年軍臻訓中心 | The Anchor House |
| 神舟關顧行動 | The Ark Mission |
| 基督教敬拜會 | The Praise Assembly |
| 華特迪士尼(香港)有限公司 | The Walt Disney Company (Hong Kong) Limited |
| 湯美仕(亞太)有限公司 | Toms Asia Pacific Limited |
| 大華銀行 | United Overseas Bank |
| 頂好海鮮酒家 | Very Good Restaurant |
| 穩勝物流有限公司 | Vins Logistics Limited |
| 惠僑英文中學 | Wai Kiu College |
| WeWah Music Company Limited | |
| 一田 | YATA |
| 香港中華基督教青年會 | YMCA |
| 中華基督教英華堂 | Ying Wa Church |



啓愛共融社區中心
J Life Family Service Centre

九龍深水埗大南街380號地下
G/F, 380 Tai Nan Street, Sham Shui Po



啓愛共融基金永義慈善音樂及
食物資源中心
Meal惜Box Music and Food
Resources Center

九龍長沙灣大南西街609號永義廣場22樓C室
Unit C, 22/F, Easy Tower, 609 Tai Nan West Street, Cheung Sha Wan



啓愛青年中心
J Cafe Youth Centre

九龍深水埗南昌街203-211號昌華新樓一樓G室
Room G, 1/F, Cheong Wah Building, 203-211 Nam Cheong Street, Sham Shui Po



啓愛點社會企業
J Life Mart

九龍深水埗大南街343號地下
G/F, 343 Tai Nan Street, Sham Shui Po



www.jlifefoundation.org



Llifefoundation & fb.com/jlifemart



[jlifefoundation](https://www.instagram.com/jlifefoundation) & [jlifemart](https://www.instagram.com/jlifemart)